
Low Voltage

General Performance

High efficiency aluminum motors

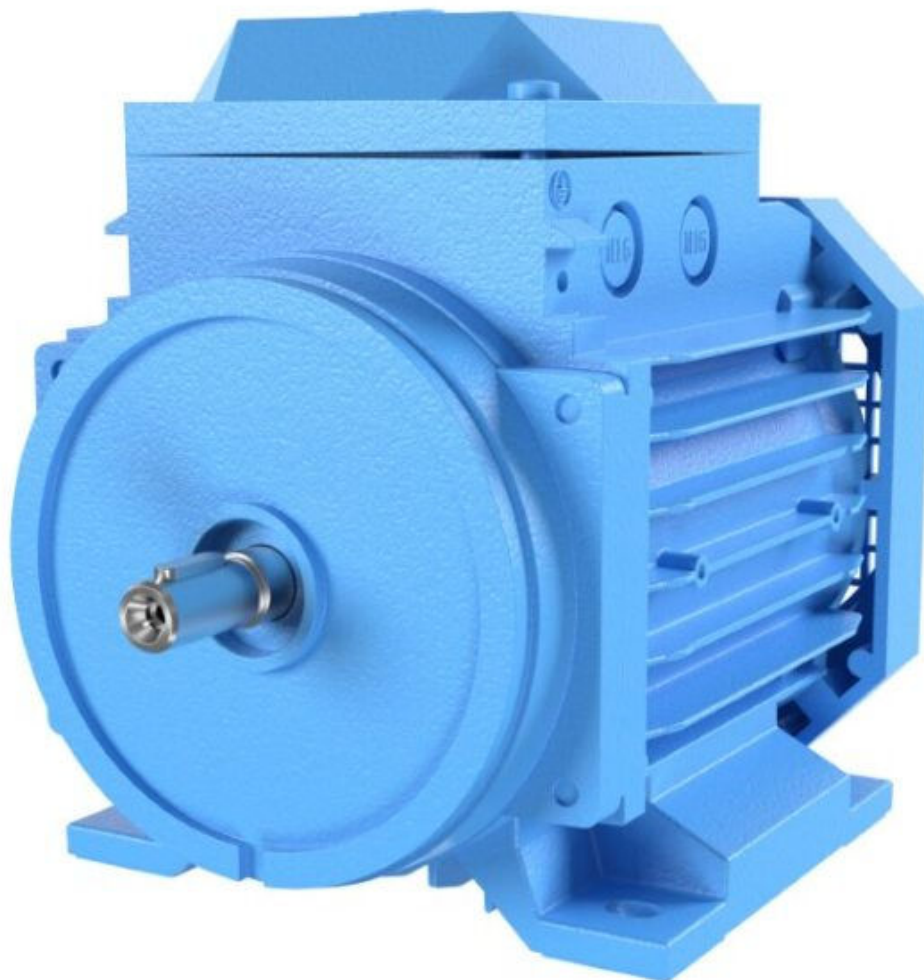
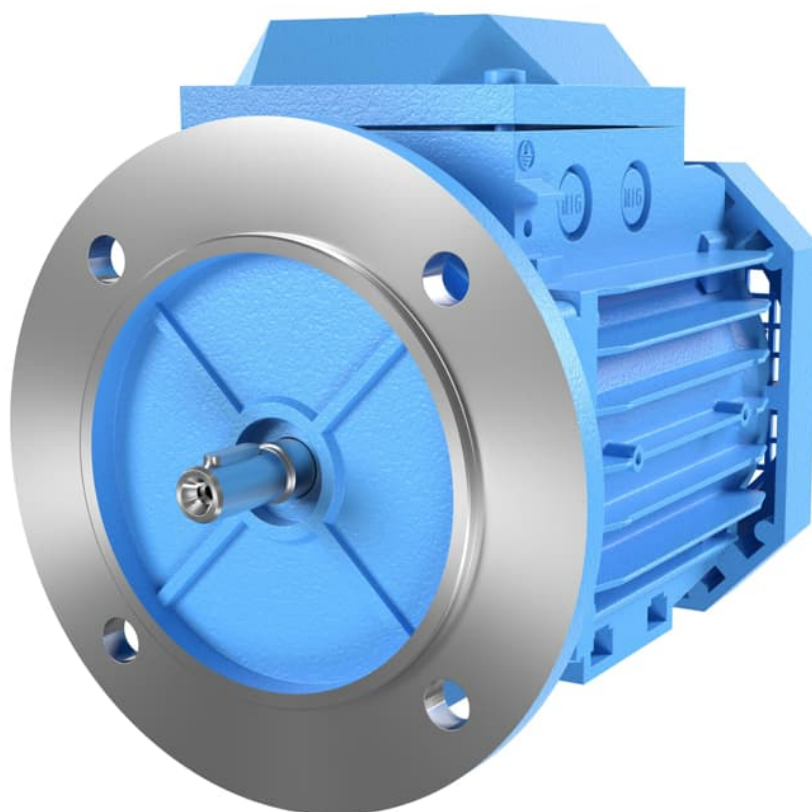


ABB offers a comprehensive range of reliable and high efficiency motors. ABB's general performance IE2, IE3 efficiency motors are best suited for applications where simplicity and off-the-shelf availability are paramount.

General performance IE2, IE3 high efficiency aluminum motors Sizes 71 to 90

| | |
|----------------|--|
| 04 | Product note |
| 05 - 06 | Technical data |
| 07 | Dimension drawings |
| 08 | General performance motors in brief |

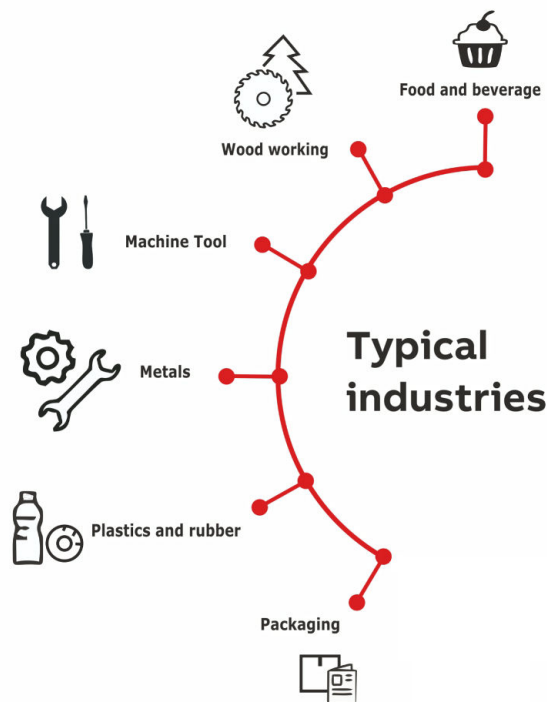


Product note

Aluminum motors are used for various applications where low weight is preferred. Aluminum has reduced weight due to its relatively low density. Also due to its anti corrosive properties & better finishing, these motors are preferred in applications like Food and Beverage that require clean environment. Better heat dissipation of Aluminum motors make it more reliable for longer operations.

With more than 130 years of manufacturing experience we make sure the motors we supply will continue to operate reliably well into the future. ABB has been manufacturing Aluminum motors globally and catering to various segments since decades.

ABB Aluminum motors are highly acclaimed in the market due to its high performance and ensuring a reliable service over the lifetime. These motors are highly efficient for energy cost savings, as well as competitive delivery times.



Technical data

IE2 high efficiency aluminum motors

Technical data for totally enclosed squirrel cage three phase induction motors

IP 55 - IC 411 - Insulation class F, temperature rise class B, IE2 efficiency class according to IEC 60034-30-1:2014, IS 12615:2018

TEFC, 415V, 50Hz, IP55, IC411, Ambt. 50 deg, Rise Class B (70 deg)

| Output KW | Frame Size | Speed r/min | Efficiency | | | Power factor cos ϕ | Current | | Torque | | | Moment of inertia $J=1/4GD^2$ kgm ² | Weight kg |
|----------------------|------------|-------------|----------------|--------------|--------------|-------------------------|-----------|-----------|----------|-----------|-----------|--|-----------|
| | | | Full load 100% | 3/4 load 75% | 1/2 load 50% | | I_n , A | I_s/I_n | T_n Nm | T_s/T_n | T_b/T_n | | |
| 3000 r/min = 2 poles | | | 415V, 50Hz | | | | | | | | | | |
| 0.37 | M2AAX71MA2 | 2760 | 72.2 | 72.9 | 70.3 | 0.79 | 0.90 | 5.0 | 1.3 | 2.0 | 2.4 | 0.00033 | 5 |
| 0.55 | M2AAX71MB2 | 2785 | 74.8 | 75.5 | 73.0 | 0.79 | 1.30 | 5.0 | 1.9 | 2.2 | 2.7 | 0.00041 | 6 |
| 0.75 | M2AAX80MA2 | 2820 | 77.4 | 78.0 | 75.7 | 0.79 | 1.70 | 6.0 | 2.5 | 2.3 | 2.8 | 0.00067 | 9 |
| 1.1 | M2AAX80MB2 | 2840 | 79.6 | 80.0 | 77.9 | 0.77 | 2.5 | 6.0 | 3.7 | 2.5 | 3.0 | 0.00088 | 10 |
| 1.5 | M2AAX90SA2 | 2875 | 81.3 | 82.0 | 80.3 | 0.83 | 3.1 | 6.0 | 5.0 | 2.3 | 3.0 | 0.00208 | 13 |
| 2.2 | M2AAX90LA2 | 2878 | 83.2 | 84.0 | 82.6 | 0.84 | 4.4 | 7.0 | 7.3 | 2.5 | 3.1 | 0.00274 | 16 |

| Output KW | Frame Size | Speed r/min | Efficiency | | | Power factor cos ϕ | Current | | Torque | | | Moment of inertia $J=1/4GD^2$ kgm ² | Weight kg |
|----------------------|------------|-------------|----------------|--------------|--------------|-------------------------|-----------|-----------|----------|-----------|-----------|--|-----------|
| | | | Full load 100% | 3/4 load 75% | 1/2 load 50% | | I_n , A | I_s/I_n | T_n Nm | T_s/T_n | T_b/T_n | | |
| 1500 r/min = 4 poles | | | 415V, 50Hz | | | | | | | | | | |
| 0.25 | M2AAX71MA4 | 1395 | 68.5 | 67.5 | 62.1 | 0.65 | 0.9 | 5.0 | 1.7 | 1.9 | 2.2 | 0.00059 | 5 |
| 0.37 | M2AAX71MB4 | 1395 | 72.7 | 72.0 | 67.0 | 0.65 | 1.10 | 5.0 | 2.5 | 1.9 | 2.2 | 0.00076 | 6 |
| 0.55 | M2AAX80MA4 | 1415 | 77.1 | 76.0 | 71.0 | 0.71 | 1.40 | 5.0 | 3.7 | 2.2 | 2.8 | 0.00156 | 8 |
| 0.75 | M2AAX80MB4 | 1425 | 79.6 | 78.5 | 74.3 | 0.67 | 1.97 | 6.0 | 5.0 | 3.0 | 3.5 | 0.00247 | 12 |
| 1.1 | M2AAX90SA4 | 1430 | 81.4 | 80.6 | 76.8 | 0.74 | 2.55 | 6.0 | 7.3 | 3.0 | 3.5 | 0.00372 | 14 |
| 1.5 | M2AAX90LA4 | 1430 | 82.8 | 82.2 | 79.4 | 0.73 | 3.47 | 6.0 | 10.0 | 3.0 | 3.5 | 0.00462 | 16 |

| Output KW | Frame Size | Speed r/min | Efficiency | | | Power factor cos ϕ | Current | | Torque | | | Moment of inertia $J=1/4GD^2$ kgm ² | Weight kg |
|----------------------|------------|-------------|----------------|--------------|--------------|-------------------------|-----------|-----------|----------|-----------|-----------|--|-----------|
| | | | Full load 100% | 3/4 load 75% | 1/2 load 50% | | I_n , A | I_s/I_n | T_n Nm | T_s/T_n | T_b/T_n | | |
| 1000 r/min = 6 poles | | | 415V, 50Hz | | | | | | | | | | |
| 0.18 | M2AAX71MA6 | 900 | 56.6 | 54.6 | 47.6 | 0.62 | 0.64 | 3.5 | 1.9 | 2.0 | 2.1 | 0.00082 | 5 |
| 0.25 | M2AAX71MB6 | 900 | 61.6 | 61.3 | 55.8 | 0.62 | 1.00 | 3.5 | 2.65 | 2.0 | 2.1 | 0.00105 | 6 |
| 0.37 | M2AAX80MA6 | 910 | 69.0 | 68.1 | 63.1 | 0.62 | 1.20 | 4.0 | 3.9 | 2.0 | 2.4 | 0.00173 | 9 |
| 0.55 | M2AAX80MB6 | 910 | 73.1 | 72.8 | 69.2 | 0.66 | 1.60 | 4.0 | 5.8 | 2.1 | 2.5 | 0.00274 | 10 |
| 0.75 | M2AAX90SA6 | 945 | 75.9 | 74.3 | 69.2 | 0.62 | 2.2 | 4.5 | 7.6 | 2.4 | 3.2 | 0.00438 | 14 |
| 1.1 | M2AAX90LA6 | 935 | 78.1 | 77.3 | 73.3 | 0.63 | 3.1 | 4.5 | 11.2 | 2.3 | 2.9 | 0.00507 | 17 |

Efficiency values are measured according to IEC 60034-2-1; 2007, IS 15999(Part2 Sec1):2011
 Please note that the values are not comparable without knowing the testing method. ABB has calculated the efficiency values according to indirect method, stray load losses (additional losses) determined from measuring.

I_s / I_n = Starting current
 T_s / T_n = Locked rotor torque
 T_b / T_n = Breakdown

Technical data

IE3 premium efficiency aluminum motors

Technical data for totally enclosed squirrel cage three phase induction motors

IP 55 - IC 411 - Insulation class F, temperature rise class B, IE3 efficiency class according to IEC 60034-30-1:2014, IS 12615:2018

TEFC, 415V, 50Hz, IP55, IC411, Ambt. 50 deg, Rise Class B (70 deg)

| Output KW | Frame Size | Speed r/min | Efficiency | | | Power factor cos ϕ | Current | | Torque | | | Moment of inertia J=1/4GD ² kgm ² | Weight kg |
|-----------|------------|----------------------|----------------|--------------|--------------|-------------------------|--------------------|--------------------------------|-------------------|--------------------------------|--------------------------------|---|-----------|
| | | | Full load 100% | 3/4 load 75% | 1/2 load 50% | | I _n , A | I _s /I _n | T _n Nm | T _s /T _n | T _b /T _n | | |
| | | 3000 r/min = 2 poles | | 415V, 50Hz | | | | | | | | | |
| 0.37 | M2AAX71MC2 | 2790 | 75.5 | 75.4 | 72.7 | 0.72 | 0.95 | 5.5 | 1.3 | 2.1 | 2.5 | 0.00033 | 5 |
| 0.55 | M2AAX71MB2 | 2782 | 78.1 | 78.4 | 76.4 | 0.73 | 1.35 | 5.5 | 1.9 | 2.1 | 2.6 | 0.00041 | 6 |
| 0.75 | M2AAX80MC2 | 2870 | 80.7 | 80.0 | 76.7 | 0.76 | 1.7 | 6.5 | 2.5 | 2.8 | 3.6 | 0.00080 | 9 |
| 1.1 | M2AAX80MD2 | 2865 | 82.7 | 83.3 | 81.9 | 0.80 | 2.3 | 7.0 | 3.7 | 2.8 | 3.6 | 0.00119 | 11 |
| 1.5 | M2AAX90SB2 | 2882 | 84.2 | 84.6 | 83.0 | 0.83 | 3 | 6.0 | 5.0 | 2.7 | 3.3 | 0.00224 | 15 |
| 2.2 | M2AAX90LB2 | 2890 | 85.9 | 86.7 | 85.8 | 0.88 | 4.4 | 7.0 | 7.3 | 3.0 | 3.5 | 0.00304 | 18 |

| Output KW | Frame Size | Speed r/min | Efficiency | | | Power factor cos ϕ | Current | | Torque | | | Moment of inertia J=1/4GD ² kgm ² | Weight kg |
|-----------|------------|----------------------|----------------|--------------|--------------|-------------------------|--------------------|--------------------------------|-------------------|--------------------------------|--------------------------------|---|-----------|
| | | | Full load 100% | 3/4 load 75% | 1/2 load 50% | | I _n , A | I _s /I _n | T _n Nm | T _s /T _n | T _b /T _n | | |
| | | 1500 r/min = 4 poles | | 415V, 50Hz | | | | | | | | | |
| 0.25 | M2AAX71MD4 | 1415 | 73.5 | 70.4 | 63.9 | 0.64 | 0.72 | 4.6 | 1.68 | 2.3 | 2.5 | 0.00075 | 7 |
| 0.37 | M2AAX71MC4 | 1415 | 77.3 | 76.0 | 67.0 | 0.65 | 1.02 | 4.6 | 2.5 | 2.5 | 2.8 | 0.00098 | 8 |
| 0.55 | M2AAX80MC4 | 1435 | 80.8 | 80.0 | 75.0 | 0.70 | 1.35 | 6.0 | 3.7 | 2.5 | 2.8 | 0.00195 | 11 |
| 0.75 | M2AAX80MD4 | 1445 | 82.5 | 81.1 | 77.1 | 0.70 | 2.05 | 4.5 | 5.0 | 3.5 | 3.9 | 0.00309 | 14 |
| 1.1 | M2AAX90SB4 | 1435 | 84.1 | 83.7 | 81.0 | 0.70 | 2.60 | 6.0 | 7.3 | 3.0 | 3.7 | 0.00397 | 15 |
| 1.5 | M2AAX90LB4 | 1431 | 85.3 | 85.2 | 82.9 | 0.75 | 3.50 | 6.0 | 10.0 | 3.5 | 3.9 | 0.00486 | 18 |

| Output KW | Frame Size | Speed r/min | Efficiency | | | Power factor cos ϕ | Current | | Torque | | | Moment of inertia J=1/4GD ² kgm ² | Weight kg |
|-----------|------------|----------------------|----------------|--------------|--------------|-------------------------|--------------------|--------------------------------|-------------------|--------------------------------|--------------------------------|---|-----------|
| | | | Full load 100% | 3/4 load 75% | 1/2 load 50% | | I _n , A | I _s /I _n | T _n Nm | T _s /T _n | T _b /T _n | | |
| | | 1000 r/min = 6 poles | | 415V, 50Hz | | | | | | | | | |
| 0.18 | M2AAX71MC6 | 931 | 63.9 | 60.9 | 55.0 | 0.65 | 0.70 | 3.3 | 1.85 | 2.3 | 2.6 | 0.00103 | 6 |
| 0.25 | M2AAX71MD6 | 931 | 68.6 | 65.6 | 59.3 | 0.65 | 0.82 | 3.6 | 2.56 | 2.5 | 2.8 | 0.00140 | 8 |
| 0.37 | M2AAX80MC6 | 931 | 73.5 | 73.0 | 67.0 | 0.65 | 1.15 | 3.9 | 3.8 | 2.5 | 2.8 | 0.00220 | 10 |
| 0.55 | M2AAX80MD6 | 935 | 77.2 | 77.0 | 71.5 | 0.59 | 1.70 | 4.5 | 5.6 | 2.8 | 3.3 | 0.00349 | 13 |
| 0.75 | M2AAX90SB6 | 940 | 78.9 | 77.5 | 73.2 | 0.63 | 2.1 | 4.5 | 7.6 | 2.3 | 3.0 | 0.00487 | 18 |
| 1.1 | M2AAX90LB6 | 945 | 81.0 | 79.7 | 75.4 | 0.61 | 3.1 | 4.5 | 11.1 | 3.0 | 3.6 | 0.00676 | 21 |

Efficiency values are measured according to IEC 60034-2-1; 2007, IS 15999(Part2/Sec1):2011
Please note that the values are not comparable without knowing the testing method. ABB has calculated the efficiency values according to indirect method, stray load losses (additional losses) determined from measuring.

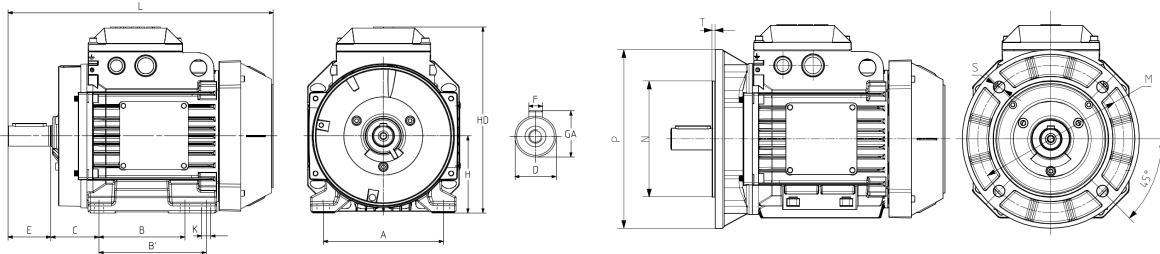
I_s / I_n = Starting current
T_s / T_n = Locked rotor torque
T_b / T_n = Breakdown

Dimension drawings

General performance IE2, IE3 high efficiency aluminum motors Sizes 71 - 90

Foot-mounted motor IM1001, B3

Flange-mounted motor IM 3001, B5



| Motor Size | D Poles | | GA Poles | | F Poles | | E Poles | | L max Poles | | A | B | B' | C | HD | K | H | M | N | P | S | T |
|--|---------|-----|----------|------|---------|-----|---------|-----|-------------|-------------------|-----|-----|-----|----|-----|----|----|-----|-----|-----|----|-----|
| | 2 | 4-8 | 2 | 4-8 | 2 | 4-8 | 2 | 4-8 | 2 | 4-8 | | | | | | | | | | | | |
| General performance aluminum motors | | | | | | | | | | | | | | | | | | | | | | |
| 71M | 14 | 14 | 16.0 | 16.0 | 5 | 5 | 30 | 30 | 257 | 257 ¹⁾ | 112 | 90 | - | 45 | 180 | 7 | 71 | 130 | 110 | 160 | 10 | 3.5 |
| 80M | 19 | 19 | 21.5 | 21.5 | 6 | 6 | 40 | 40 | 266 | 266 ²⁾ | 125 | 100 | - | 50 | 194 | 10 | 80 | 165 | 130 | 200 | 12 | 3.5 |
| 90SL | 24 | 24 | 27 | 27.0 | 8 | 8 | 50 | 50 | 309 | 309 ³⁾ | 140 | 100 | 125 | 56 | 218 | 10 | 90 | 165 | 130 | 200 | 12 | 3.5 |

- 1) IE3: M2AAX71C4,D6 L=270
- 2) IE2: M2AAX80B4,B6, IE3: M2AAX80D2,C4,D6 L=294
IE3: M2AAX80D4 L=304
- 3) IE2: M2AAX90LA4B4,LA6, IE3:M2AAX90LB2,LB4,SB6 L=331
IE3: M2AAX90LB6 L=349

Above table gives the main dimensions in mm.

For detail dimensions, refer to respective GAD

Motors in brief

General performance IE2, IE3 high efficiency aluminum motors in brief

| Size | | 71 | 80 | 90 |
|----------------------------|---|---|------------|--------------------|
| Stator | Material | Die-cast aluminum alloy | | |
| | Paint colour shade | Munsell blue 8B 4.5/3.25 / NCS 4822 B05G | | |
| | Surface Treatment | C3 medium according to ISO / EN 12944-5 | | |
| Feet | Integrated with stator | | | |
| | Material | Die-cast aluminum alloy | | |
| Bearing end shields | Material | Die-cast aluminum alloy | | |
| | Paint colour shade | Munsell blue 8B 4.5/3.25/NCS 4822 B05G | | |
| | Surface Treatment | C3 medium according to ISO / EN 12944-5 | | |
| Bearings | D-end | 6203-2Z/C3 | 6204-2Z/C3 | 6205-2Z/C3 |
| | N-end | 6202-2Z/C3 | 6203-2Z/C3 | 6204-2Z/C3 |
| Axially-locked | locked at D-end | With retaining ring | | With bearing cover |
| Bearing seals | Axial seal as standard, radial on request | | | |
| Lubrication | Permanently lubricated shielded bearings | | | |
| Rating plate | Material | Aluminum | | |
| Terminal Box | Frame material | Die-cast aluminum alloy | | |
| | Cover material | Die-cast aluminum alloy | | |
| | Cover screws material | Self tapping screws 8.8 | | |
| Connections | Cable entries | 2xM20 | | 1xM20, 1xM25 |
| | Cable Sizes | 4mm ² | | |
| | Terminal Stud Size | M4 | | |
| | Terminals | Upto 2HP - STAR / 3 Leads > 2 HP - DELTA / 6 Leads, (Cable lugs not included) | | |
| Fan | Material | Polypropylene, Reinforced with 20% glass fibre | | |
| Fan Cover | Material | Polypropylene, Reinforced with 20% glass fibre | | |
| | Paint Colour shade | Munsell blue 8B 4.5/3.25/NCS 4822 B05G | | |
| Stator winding | Material | Copper | | |
| | Insulation | Insulation class F, Temperature rise class B unless otherwise stated | | |
| | Winding protection | Available as option | | |
| Rotor winding | Material | Pressure diecast aluminum | | |
| Balancing method | Half Key Balancing as Standard | | | |
| Key ways | Closed Key Way | | | |
| Enclosure | IP 55, Higher protection on request | | | |
| Cooling method | IC 411 | | | |
| Drain holes | Drain holes with closable plastic plugs, open on delivery | | | |
| Lifting lugs | Integrated with the stator | | | |



—
ABB India Limited

32, Industrial Area,
N.I.T., Faridabad - 121 001
Tel: +91 129 2448100

www.abb.co.in

We reserve the right to make technical changes or modify the contents of this document without prior notice. With regard to purchase orders, the agreed particulars shall prevail. ABB does not accept any responsibility whatsoever for potential errors or possible lack of information in this document.

We reserve all rights in this document and in the subject matter and illustrations contained therein. Any reproduction, disclosure to third parties or utilization of its content - in whole or in parts - is forbidden without ABB's prior written consent.

08/2023

