



MF Three-phase motors

+8400 motec

A matter of principle: the right products for every application.

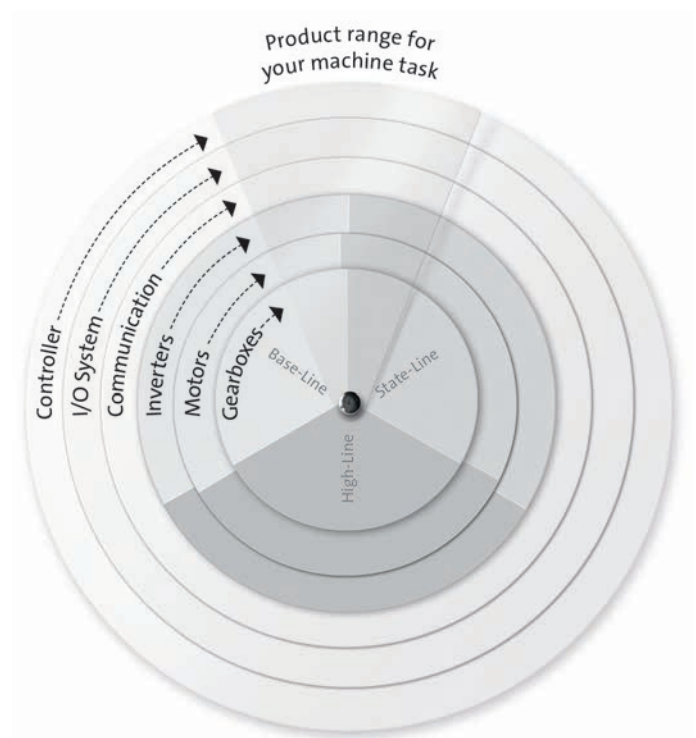
Lenze's extensive L-force product portfolio follows a very simple principle. The functions of our finely scaled products are assigned to the three lines Base-Line, State-Line or High-Line.

But what does this mean for you? It allows you to quickly recognise which products represent the best solution for your own specific requirements.

Powerful products with a major impact:

- Easy handling
- High quality and durability
- Reliable technologies in tune with the latest developments

Lenze products undergo the most stringent testing in our own laboratory. This allows us to ensure that you will receive consistently high quality and a long service life. In addition to this, five logistics centres ensure that the Lenze products you select are available for quick delivery anywhere across the globe. It's as easy as that!



Compact and dynamic for inverter operation.



Dynamic, inverter-optimised three-phase AC motor for variable movements.

Power range:

0.55 to 22 kW (1.53 to 59.2 Nm)

This high-efficiency powerhouse is ideally suited to: applications that require large setting ranges in conjunction with compact dimensions.

Features

- More dynamic than a conventional three-phase AC motor
- More energy-efficient than IE2
- Available in the models B3, B5, B14 (4-pole) and as geared motors (2-pole, 4-pole and 6-pole)
- Setting range during inverter operation up to 1:24 with constant torque
- Enclosure IP55
- Inverter-compatible windings as standard

Technology – Inverter-optimised MF AC motors – An overview

Specifications Inverter operation at 120 Hz

Size		063	071	080	090	100	112	132
Rated power	P [kW]	0.55	1.1	2.2	4	5.5	11	15
		0.75	1.5	3		7.5		18.5 22
Rated current	I [A]	1.8	3.2	5.3	8.5	12.9	23.5	31.2
		2.3	3.9	6.6		15.9		39 44.5
Rated torque	M [Nm]	1.53	3.01	6	10.9	14.9	29.7	40.3
		2.11	4.15	8.2		20.3		49.6 59.2
Rated speed	n [rpm]	3440	3490	3500	3480	3525	3530	3560
		3400	3450	3480		3515		3560 3550

The modular system for your application

Thanks to their flexible modular design, the three-phase AC motors are ideal for use with any application:

- Brake attachments
 - Scalable braking torques
 - Long-life design
 - Various controls
- Feedback systems
 - Resolver
 - Incremental encoder
 - Absolute value encoder
- Self-ventilated or separate blower
- Connection options
 - Plug connectors
 - Terminal box
- Various thermal sensors

Other properties

Degree of protection	
EN 60529	IP55
Energy efficiency class	
	Better than IE2
Approvals	
	cURus, EAC, CCC and UkrSepro
Temperature class	
IEC / EN 60034-1 utilisation	B
IEC / EN 60034-1 insulation system	F
Climatic conditions	
Storage temperature	-30°C to +60°C
Operating temperature	-20°C to +40°C
Connection	
Power connection	Terminal box or plug connectors
Brake connection	
Blower connection	
Feedback connection	
Colour	
	Primered Uncoated Paint in various corrosion-protection designs in accordance with RAL colours

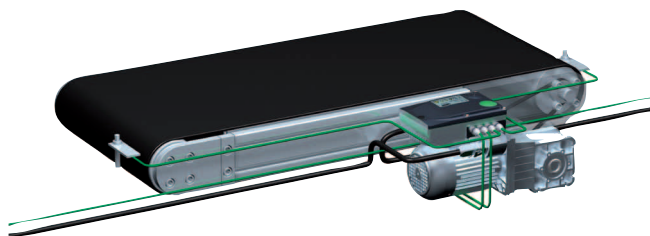
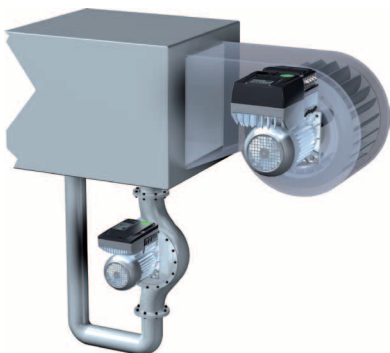
Efficiently and consistently decentralised.



The compact 8400 motec motor inverter is an attractive alternative, particularly for intralogistic applications as well as pumps and fans and guarantees a high degree of efficiency in every respect. It can be mounted either on the geared motor or on the wall and is available in a power range of 0.37 to 7.5 kW.

Highlights

- IP65 as standard
- Energy savings of up to 30% are possible in connection with the MF motor series, which is exclusively tailored to the motor inverter
- Large LED ensures that operating status is clearly visible from a distance



Inverter Drives 8400 motec – at a glance

The drive unit – simple handling

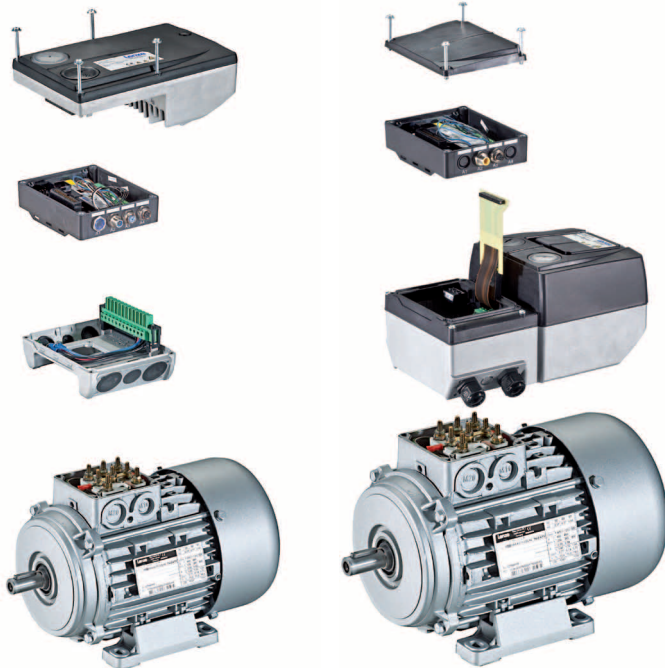
- Simple commissioning via DIP switch, potentiometer or diagnosis terminal
- Easy to replace memory module
- Large LED status display – clearly visible, even under the most challenging installation conditions

The communication unit – functionality on site

- CANopen, PROFIBUS, PROFINET, EtherCAT, EtherNET/IP and AS interface
- Includes integrated STO safety technology
- I/Os on board
- Pluggable M-12 connection system for communication, safety engineering and sensor technology or via screwed connections

The wiring unit – easily accessible and simple to connect

- Flexible connection options such as cable glands and various plug connections
- Connection for brake resistor
- Spring-applied brake control



8400 motec 0.37 to 3.0 kW

8400 motec 4.0 to 7.5 kW

Functions	<ul style="list-style-type: none"> Freely assignable user menu Motor identification V/f control with/without encoder (linear or square-law) “VFC eco” Flying restart circuit S-ramps for smooth acceleration and deceleration I²t motor monitoring DC injection brake Fixed frequencies Parameter change-over PID controller Integrated, wear free brake control
Properties	<ul style="list-style-type: none"> Protection against short circuits, earth faults, overvoltage, motor stalling Integrated interference suppression in accordance with EN 61800-3, category C2, category C1 motor mounted ≤ 1.5 kW Protection against restart for cyclic mains switching Usable in an IT system Safe torque off (STO), EN ISO 13849-1 (PL e), EN 61508/EN 62061 (SIL 3) Approvals: CE, UR, cUR, RoHS

 Lenze Drives GmbH
Postfach 10 13 52, D-31763 Hameln
Breslauer Straße 3, D-32699 Extertal
Germany
HR Lemgo B 6478

 +49 5154 82-0
 +49 5154 82-2800
 sales.de@lenze.com
 www.lenze.com